

## UKF SERIES WEATHERPROTECTED SWITCH

The UKF Series of Weatherprotected Isolating Switches is a robust range of switches suitable for virtually any external application.

Included in the range are single, double and triple pole switches from 20 to 80 Amps. The base mouted mechanism provides for easier termination and more wiring room. Switch dimen-sions are 165mm A82mm with an overall height of 85mm.

Fixed Earth and Neutral connector bars with dual clamping screws per tunnel provide equal as tripping lengths and secure clamping for all cables, Teminal bore size 5–A6.6mm.

A safety feature for mouting switches to metal stuctures is the insulating caps that cover base mounting screws to totally protect them from any live cables.



### Technical Parameter:

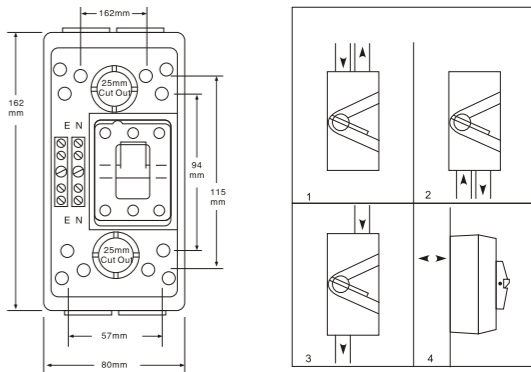
1. Standard : AS/NZS3947. 3 IEC/EN60947-3
2. Rated : Voltage : 250/500V AC
3. Rated Frequency : 50/60Hz
4. Utilization Category : AC22A
5. Number of Pole : 1, 2, 3, 4
6. IP Rating : 66

### Approvals : SAA

## UKF SERIES WEATHERPROTECTED SWITCH



1. Cables looped in and out from overhead
2. In and out from underground
3. In and out straight through the switch
4. two 25mm rear knockouts are moulded in the base for surface mounting with concealed wiring.



Dual 25mm screwed conduit entries top and bottom (up to 55 amp.)allows four ways to surface wire the switch.

Products Available		IP Rating
UKF1-20	20A 250V Single pole surface switch. Terminals accommodate 16mm <sup>2</sup> cable .M Rating 220.	66
UKF1-35 UKF1-63	35A/63A 250V Single pole. Terminals accommodate 16mm <sup>2</sup> cables .M Raring 220.	66

Products Available		IP Rating
UKF2-20	20A 440V double. Terminals accommodate 16mm <sup>2</sup> cables .M Rarting 180.	66
UKF2-35	35A 440V double. Terminals accommodate 16mm <sup>2</sup> cables .M Rarting 180.	66
UKF2-63	63A 440V double. Terminals accommodate 16mm <sup>2</sup> cables .M Rarting 180.	66

Products Available		IP Rating
UKF3-20	20A 440V Tripe Pole Terminals accommodate 16mm <sup>2</sup> cables .M Rarting 180.	66
UKF3-35	35A 440V Tripe Pole Terminals accommodate 16mm <sup>2</sup> cables .M Rarting 180.	66
UKF3-63	55A 440V Tripe Pole Terminals accommodate 16mm <sup>2</sup> cables .M Rarting 160.	66
UKF4-20	20A 440V Tripe Pole Terminals accommodate 16mm <sup>2</sup> cables .M Rarting 180.	66
UKF4-35	35A 440V Tripe Pole Terminals accommodate 16mm <sup>2</sup> cables .M Rarting 180.	66
UKF4-63	55A 440V Tripe Pole Terminals accommodate 16mm <sup>2</sup> cables .M Rarting 160.	66