

# Hi-MO X6<sup>Max</sup> Scientist

LR7-54HTH

470~475M

- Suitable for Distribution Market
- Simple design embodies modern style
- Highest efficiency with the best energy generation performance
- Better product warranty, better service



25-year Warranty for  
Materials and Processing



25-year Warranty for Extra  
Linear Power Output

## Complete System and Product Certifications

IEC 61215, IEC 61730, UL 61730

ISO9001:2015: ISO Quality Management System

ISO14001: 2015: ISO Environment Management System

ISO45001: 2018: Occupational Health and Safety

IEC62941: Guideline for module design qualification and type approval

**LONGi**



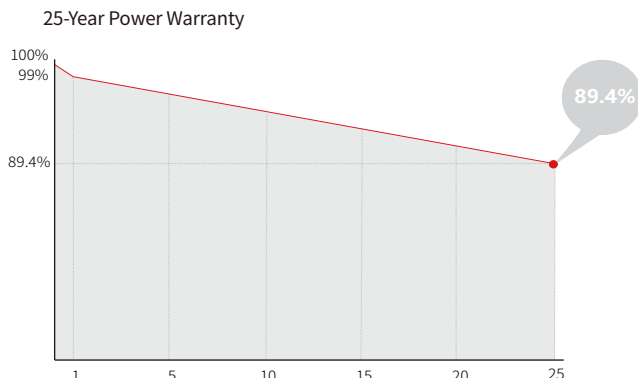
**23.3%**  
MAX MODULE  
EFFICIENCY

**±3%**  
POWER  
TOLERANCE

**<1%**  
FIRST YEAR  
POWER DEGRADATION

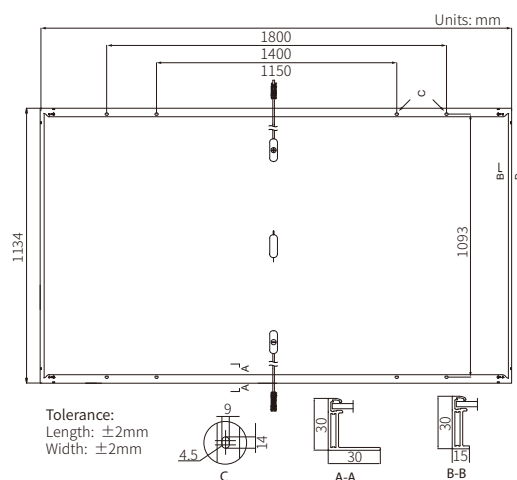
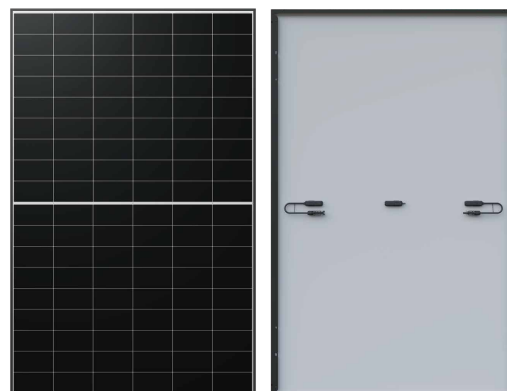
**0.40%**  
YEAR 2-25  
POWER DEGRADATION

## Additional Value



## Mechanical Parameters

Cell Orientation	108 (6×18)
Junction Box	IP68
Output Cable	4mm <sup>2</sup> , ±1200mm length can be customized
Connector	EVO2(Staubli),PV-LR5(LONGi)
Glass	Single glass, 3.2mm coated tempered glass
Frame	Anodized aluminum alloy frame
Weight	21.6kg
Dimension	1800×1134×30mm
Packaging	36pcs per pallet / 216pcs per 20' GP / 864pcs per 40' HC



## Electrical Characteristics

STC : AM1.5 1000W/m<sup>2</sup> 25°C

NOCT : AM1.5 800W/m<sup>2</sup> 20°C 1m/s

Test uncertainty for Pmax: ±3%

Module Type	LR7-54HTH-470M		LR7-54HTH-475M	
Testing Condition	STC	NOCT	STC	NOCT
Maximum Power (Pmax/W)	470	351.2	475	354.9
Open Circuit Voltage (Voc/V)	39.75	37.32	39.95	37.51
Short Circuit Current (Isc/A)	15.00	12.12	15.07	12.17
Voltage at Maximum Power (Vmp/V)	33.59	30.65	33.79	30.83
Current at Maximum Power (Imp/A)	13.99	11.45	14.06	11.51
Module Efficiency(%)	23.0		23.3	

## Operating Parameters

Operational Temperature	-40°C ~ +85°C
Power Binning Tolerance	±3%
Power measurement Tolerance	±3%
Maximum System Voltage	DC1500V (IEC/UL)
Maximum Series Fuse Rating	25A
Nominal Operating Cell Temperature	45±2°C
Protection Class	Class II
Fire Rating	IEC Class C

## Mechanical Loading

Front Side Maximum Static Loading	5400Pa
Rear Side Maximum Static Loading	2400Pa
Hailstone Test	25mm Hailstone at the speed of 23m/s

## Temperature Ratings (STC)

Temperature Coefficient of Isc	+0.050%/°C
Temperature Coefficient of Voc	-0.230%/°C
Temperature Coefficient of Pmax	-0.280%/°C